

# Agenda

**Contextual Safeguarding & Attendance**

**Feedback – You Said We Did**

**Case Study and Flowcharts**

**Social Care & Attendance**

**School Presentation**

**Information from LA**

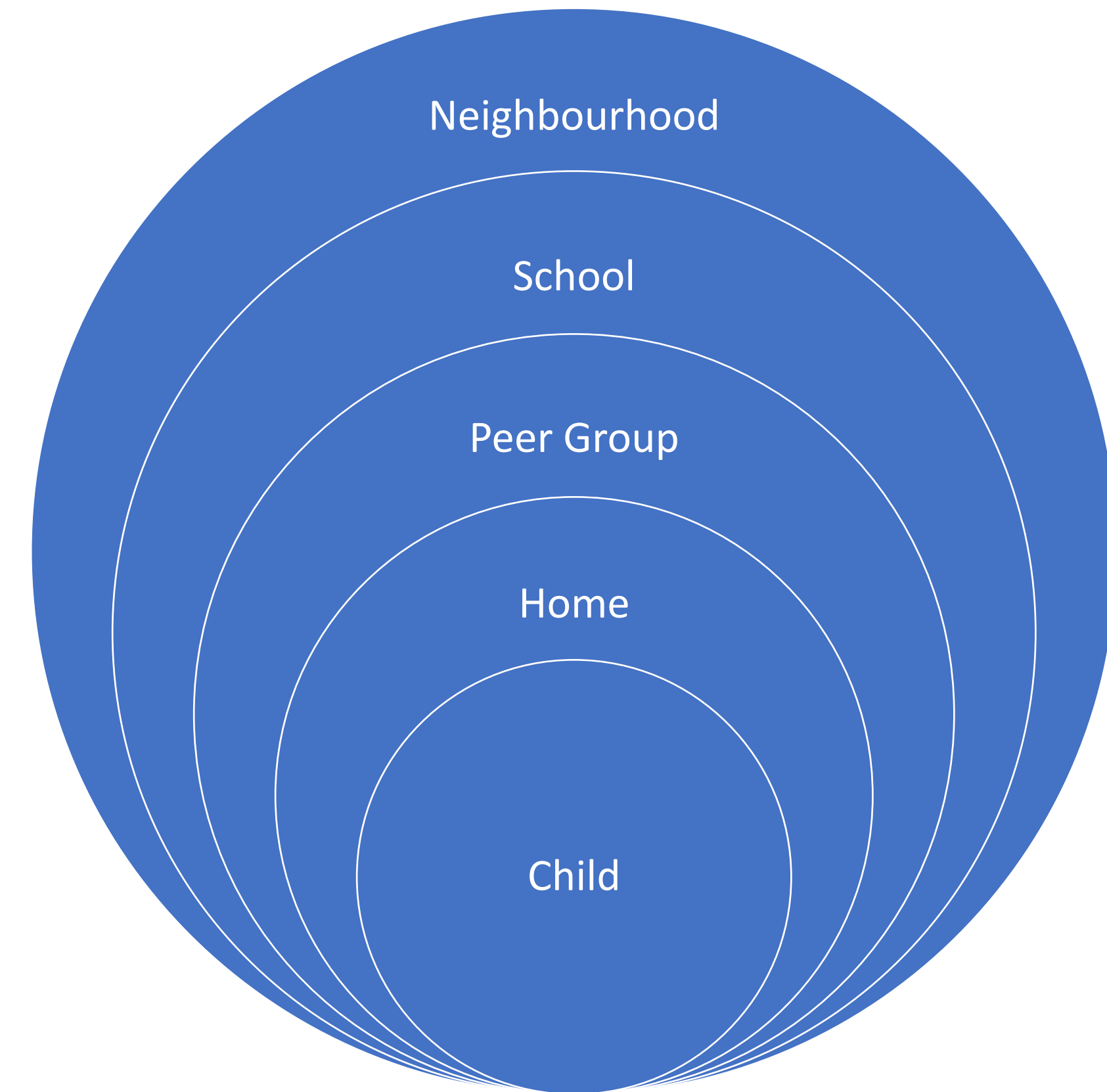
**Practical FAQs (FPNs)**

**Problem-Solving Activity**

**Message from DfE**

**Summer Term Hubs**

# Contextual Safeguarding



[Contextual Safeguarding: Re-writing the rules of child protection](#) | Carlene Firmin | TEDxTottenham



# You Said, We Did



# Emerging Themes from “You said, we did”

---

Multi-disciplinary working, including social care

---

Health, including working with GPs, school nursing, mental health services

---

Young Carers – identification and support

---

Parenting training & support, especially for neurodiversity and mental health

---

Parental engagement

---

Support in writing attendance contracts

---

Emotionally Based School Avoidance (EBSA)

---

Holidays

---

Military leave

---

Transition from primary to secondary

---

Direct family work

---

Culture of belonging

---

Transport

# Planned outcomes related to “You said, we did”

---

Case studies showing multi-disciplinary support

---

Flow charts – showing range of advice and guidance or strategies available

---

Practical FAQs, e.g. around Fixed Penalty Notices

---

Opportunities for joint problem-solving with other schools

---

Sharing of good practice

---

Opportunities for schools to work with schools with similar characteristics

---

Shared mechanism for comms and information

---

High impact, low cost strategies

---

Ensure consistency of messaging within LA and wider services

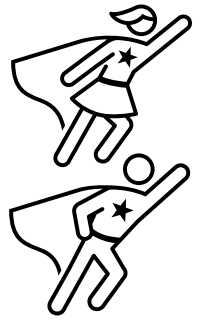
---

Access to shared resources, e.g. support plans, attendance contracts, letters

---

Signposting to ACES/Trauma training





# Parenting support

Hampshire CAMHS  
PACE

<https://hampshirecamhs.nhs.uk/events/>

Hampshire  
Safeguarding Children  
Partnership (HSCP)

[www.hampshirescp.org.uk/parents-and-carers/](http://www.hampshirescp.org.uk/parents-and-carers/)

Hampshire & Isle of  
Wight Support for  
Neurodiverse Families  
(Barnardo's)

<https://www.barnardos.org.uk/what-we-do/services/hampshire-and-iow-support-neurodiverse-families>

Early Help  
Family Help Teams

[Havant.fh1@hants.gov.uk](mailto:Havant.fh1@hants.gov.uk)

PBS Wellbeing Support  
Service

<https://pbs.hants.gov.uk/wellbeing-support-service>

Hampshire School  
Nursing Teams

<https://www.what0-18.nhs.uk/resources/information-on-local-healthcare-services/school-nursing-hampshire>



Agency / Provider	Course Information	Area
Barnardo's <a href="https://www.barnardos.org.uk/what-we-do/services/hampshire-and-iow-support-neurodiverse-families">https://www.barnardos.org.uk/what-we-do/services/hampshire-and-iow-support-neurodiverse-families</a>	Provides evidenced based skills building programmes for parents and carers who have children aged 3-17 who: 1. Have a diagnosed Autistic Spectrum Condition (ASC) 2. Have a diagnosis of <u>Attention Deficit Hyperactivity Disorder</u> (ADHD) 3. Have Autism or ADHD traits	Hampshire  (based in Hedge End)

# Case study #1

## Child X

**On SEND register – Cognition & Learning**  
**Significant SEN support & intervention in place**

**Significant medical needs**

**X lives with parents and many siblings (aged pre-school to adult) several siblings also have additional needs.**

**Attendance:**

**2022-2023 = 82.3%**

**2023-2024 = 67.9%**

**Current = 26.6%**

**Additional support sought from a wide range of external agencies**

Health/ Medical Needs  
– Perplexing Presentations

Vulnerable Family  
– Social Care involvement

Parental Mental Health & Anxiety

Family's view of the importance / value of education

EBSA

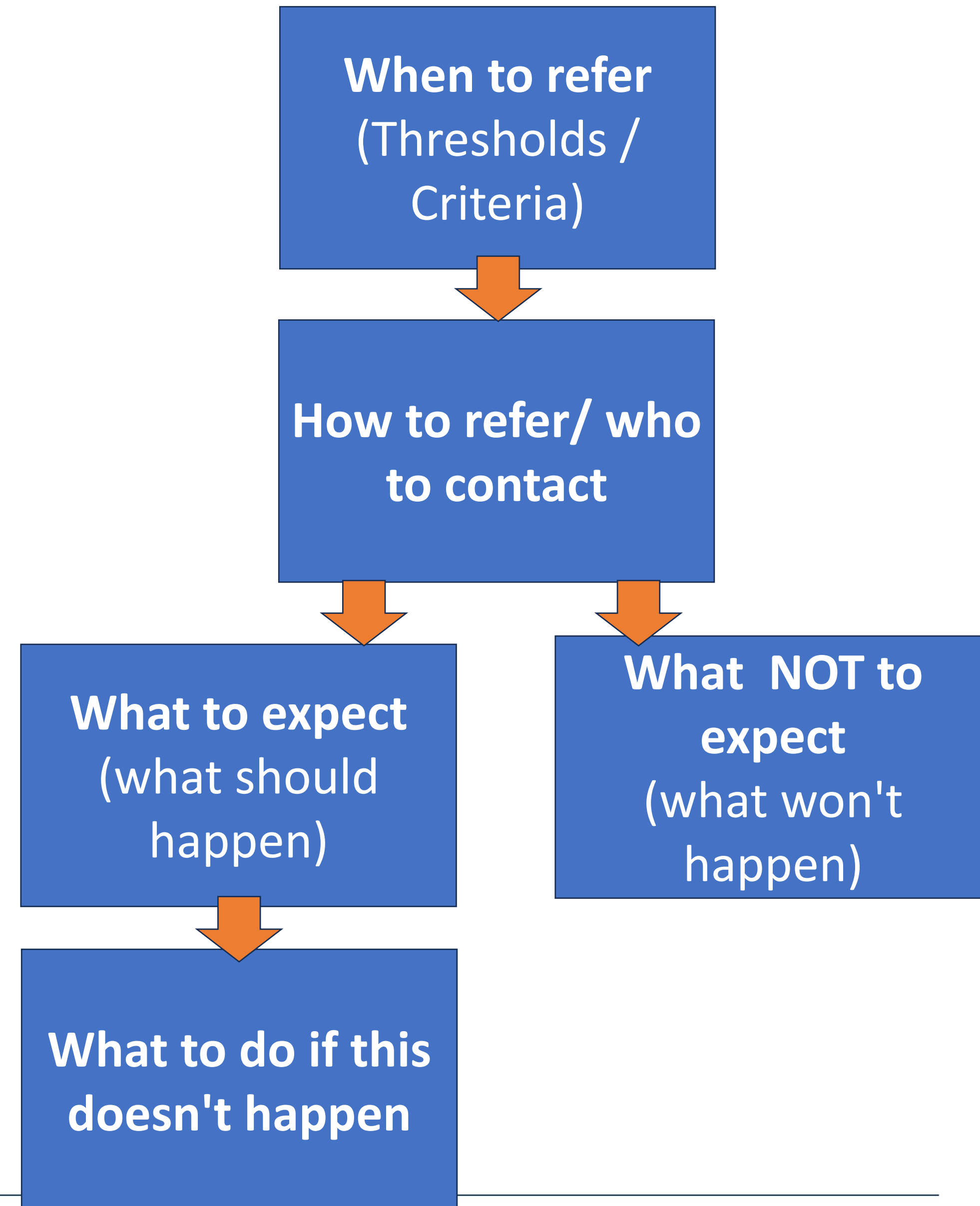
Many different agencies involved – issues around information sharing

School as a constant

# Case Study – Work in progress update

## Relevant agencies/services:

- GP
- School Nursing
- Continence specialist
- Social Care / Family Help Teams
- SEN
- MHST
- Adult services





# Working with social care on attendance (VIDEO)



If you have questions, please use the post-hub evaluation form to submit them and we will work with social care colleagues to answer these in the next hub.



# Data - school sample

We would like to evaluate the impact of WTTISA and evidence the most common issues on attendance for Children with a Social Worker. To help us to do this, we would like to:

- Work with a sample of schools to track and monitor the attendance and suspensions for children on a CP plan.
- Cover a range of school types and phases
- Use the data to recognise success and to address issues

If you are keen to be involved, please use the post-hub evaluation form to express your interest.



# Targeting Support Meetings (TSMs)

## Purpose

- Identify, discuss, and agree action plans and joint approaches for severely absent pupils (where they do not already have a plan in place).
- Discuss and agree approaches for persistently absent pupils where they have barriers to attendance that require a multi-agency response to overcome.

## Booking

- Via the booking link for IEE (attendance) hub
- Evaluation will include link

## Experience so far

- Severely Absent Pupils, Persistently Absent Pupils
- Attendance for cohorts
- Generic improving attendance approaches



# Satellite Briefings

What does a medical referral look like?

Parenting

FPNs

RHP

EBSA

MHST

School characteristics – rural, high economic disadvantage, small schools

# Attendance FAQs

Communication with the Inclusion Support Service – Mendix Form

20 day absence & removal from roll

Penalty Notices


Legal Intervention



# Communication with the Inclusion Support Service – Mendix Form

[Hampshire County Council - School forms start](#)

[Hampshire County Council - Contact reason](#)

 Hampshire  
County Council

## School forms

### Contact reason

I want to: required

Make a Referral to Legal Intervention Team

Report a child missing in education

Notify of a 15 Day Absence

Inform of Elective Home Education

Inform of Reduced Hours Provision Start/Update/End

Ask for advice

Request a Penalty Notice Number

Make a Medical Referral to the Inclusion Support Service

## Contact reason

I want to: required

Ask for advice

What is your query about? required

Suspension or Permanent Exclusion

Attendance

Extended leave of absence

Child missing in education

Elective Home Education

Reduced Hours

Penalty Notice

Legal Intervention



# 20 Day Absence & Removal From Roll

Ground I - The pupil has been continually absent from school for 20 school days

Where a pupil has been continuously absent from the school for a period of 20 school days or more and:

- at no point during that period did any of the circumstances in regulation 10(3) Table 2 or 10(4) Table 3 other than the ones for codes G, N, or O apply,
- the school does not have reasonable grounds to believe that the pupil is unable to attend because of sickness or an unavoidable cause, and
- **the school and the local authority have jointly made reasonable efforts to find out the pupil's location and circumstances, but:**
  - they have not succeeded, or
  - they have succeeded but they **agree that there are no reasonable grounds to believe that the pupil will attend the school again**, taking into account any reasonable steps they could take (either jointly or separately) to secure the pupil's attendance.

**Where a pupil has been located and their circumstances discovered but they have not returned to school, a joint decision is required** between the school and the local authority before this ground is used.

**This ground cannot be used in any case where:**

- the pupil could reasonably be supported to return to school regardless of whether that support has been provided
- a pupil is absent because of a health reason
- ~~attendance legal action to cause the pupil to return to school could reasonably be taken instead.~~

This means **the final criterion will be met very rarely**, usually when a pupil has been out of the country for a prolonged period and there are no signs of the pupil returning.

# Penalty Notices

## To issue or not to issue?

- Once penalty notice is issued it cannot be withdrawn less there are errors in it, or it shouldn't have been issued in the first place.
- If the penalty notice is unpaid, the parents/carers will be taken to court for the original offence around the non-attendance.
- It is vital that schools only issue a penalty notice if they are prepared for the process to follow through, potentially to court and a conviction for parents/carers.

## 2nd Offence (in a 3- year rolling period)

- The correct request needs to be completed for a second offence in a three-year rolling period but checks will be made centrally too.
- There is no option with a second offence to pay at the reduced fee, and it will automatically be charged at the higher rate of £160.
- If a pupil has moved from another Local Authority are during that three-year rolling period, schools will need to check with the other Local Authority prior to submitting a request to a PN number.

## Child seen in a public place (in first 5 days of suspension or exclusion)

- In discussions with HCC Legal Services around the definition of 'public place' and when it might be appropriate for this to be used.
- Looking to bolster template letters for suspension and exclusion around expectations

## Timescales

- Dates of limitation start from the first day of an unauthorised holiday and so prompt requests for numbers and issue of penalty notices is vital.
- Schools should request a penalty notice number within 7 school days of the last day of holiday.

## Unpaid Penalty Notices

- If a penalty notice is unpaid, please return the requested documentation promptly to avoid the penalty notice having to be withdrawn as out of statutory timescales

## Questions from Parents

- Penalty notices are issued on behalf of schools and it is the Head Teacher's decision to issue - questions and queries from parents are the responsibility of the school.
- LA tracking numerous calls from parents where they have been directed by the school to the LA.
- School queries should be submitted (by the school) to [LitQueries@Hants.gov.uk](mailto:LitQueries@Hants.gov.uk)

# Legal intervention



A referral for legal intervention may not mean prosecution is inevitable .....  
process of warnings may be sufficient to effect change



Quality of referrals



Back logs in courts but schools to continue to refer if appropriate



New information, if it arises, to be presented before court appearance



Letter to update parents of intention to prosecute being developed



**Prosecution does not always effect change but we have a  
statutory responsibility to protect a child's right to education**





Department  
for Education

# Head Teachers Attendance Hub Meetings

- Update on the work with Hampshire LA and the DfE Adviser

January 2025

# **Overview**

**We have been working together since Autumn 2022.**

**Through your determination and leadership, you have worked incredibly hard to change the culture in Hampshire so that attendance is everyone's business.**

**You have faced challenges in terms of funding and resources, as there was no additional funding provided for the implementation of this guidance.**

**I have taken back the points raised to DfE Policy Officers.**

# **What you have achieved**

**You have been tenacious in your approach and have**

- developed your strategy, shaping and communicating the offer of support**
- a strategic I&EE Board**
- devised a Hub model**
- developed a Multi disciplinary approach**
- offered TSMs**
- developed access to data and tracking**



**Sought feedback on your offer**

**Developed opportunities for sharing best practice and joint problem solving**

**Focussed on the role of tutor and teachers, Head teacher meeting and greeting at the school gate**

# **Themes**

**Military families**

**Holiday letters**

**Rural schools**

**You are continuing to develop**

**Parental engagement**

**EBSA**

**Transitions**

**Flow charts on advice and  
guidance**

**Partnership working with...**  
**Virtual school**  
**Social Care**  
**the Voluntary sector**  
**Police**  
**YOT**  
**CAMHS**  
**School nurses**  
**Public Health**  
**GPs and Social Prescribing**

**You're looking at how you can**  
**develop the Website**  
**Webinars and Podcasts and You**  
**Tube Videos**



**Thank you for working with me  
over the past 28 months.**

**I am greatly impressed with how  
far you have come on this  
journey.**



Department  
for Education

**Sarah Hayes**

DFE Attendance Adviser

School Attendance Division | Families Group

**E:** [sarah.hayes@education.gov.uk](mailto:sarah.hayes@education.gov.uk)

[gov.uk/dfe](https://gov.uk/dfe) | [@education.gov.uk](https://education.gov.uk) | [fb.com/education.gov.uk](https://fb.com/education.gov.uk)

# Summer Term Hubs... Next Theme

Transition

Y7-Y8 transition project

Transition back into Mainstream

Transition for LAC and CWSW

HSCP Thematic audits