

Children's
Services

Eastleigh & Winchester Family Help

Winchester & Eastleigh District Headteacher Meeting
20th March 2025

Eastleigh & Winchester District Structure

District Manager – Samantha Phippard

Family Help Teams:

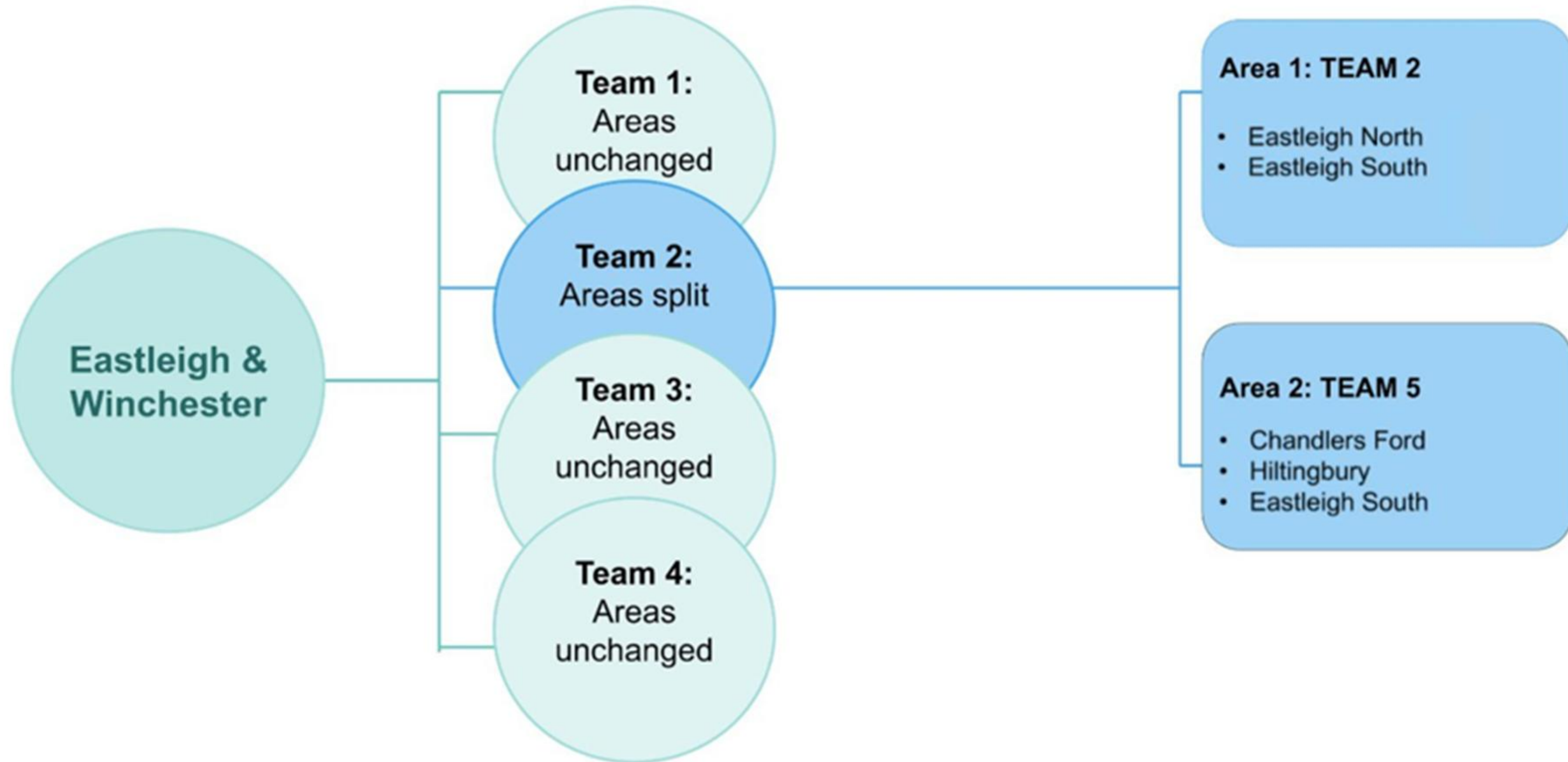
- All teams have a combination of Social Workers (inc. Senior Social Workers) and Family Practitioners. The team are also supported by Social Worker PAs.
- All teams support children from the point of initial assessment, work with children at both Level 3 and Level 4 including Early Help, CIN, CP and Looked After Children.
- All teams now have Intensive Workers aligned to them to develop further localisation and partnership working.

Early Help Hubs/Level 3:

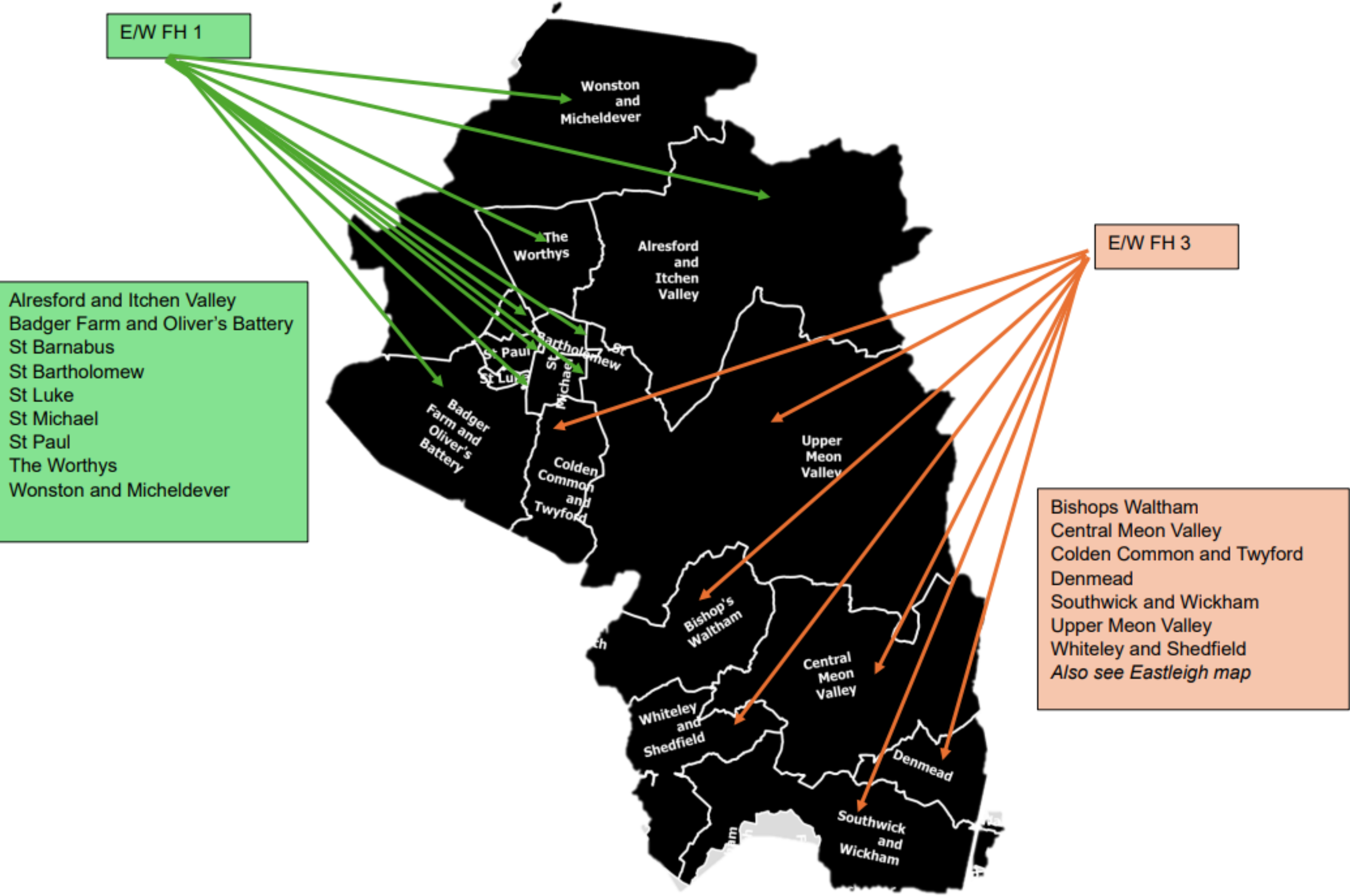
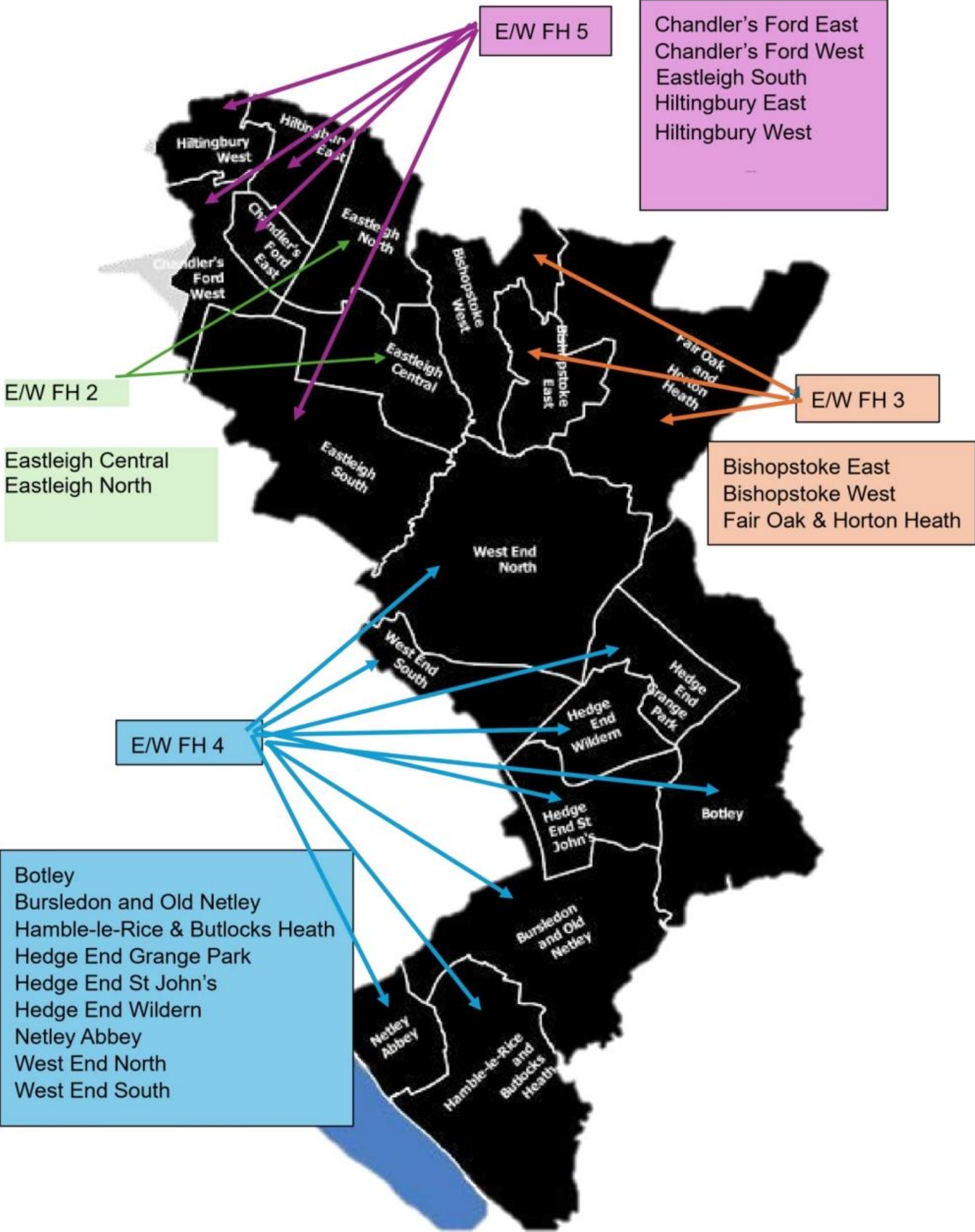
- The District is also supported by Rebecca Reeve – Early Prevention & Local Partnership Manager, whose role is:
 - Supporting to embed Early Help within the district and Family Help Teams, chairing Early Help Meetings
 - Partnership Working and Queries
 - Early Help group work timetable
 - Support agencies to Co-Ordinate Early Help (L3 cases)
 - Supporting Families Programme Oversight
 - Managing County Wide Children & Families Volunteer Service
- Contact: Rebecca.Reeve@hants.gov.uk

Family Help 1	Family Help 2	Family Help 3	Family Help 4	Family Help 5	Disabled Childrens Team	Children In Care
02380 498136	02380 498128	01962 891603	02380 498106	02380 498128	02380 498191	01962 891600
Team Managers						
Simon Burch	Emily Walker	Charlotte Birks	Annie Mutema (P/T) Gemma Patience (P/T)	Katie Kosciolk	Caroline Lees	Laura Scarborough
Assistant Team Managers						
Chloe Saint Alison Lewis	Justine Coleman	Victoria Bowers Nicky Moth	Kaylee Harding Jade Ager	TBC	Donna Jerams	Isabelle Jeannon Simon Cresswell

How could 5 teams work?



New Areas covered – Including Family Help 5



Eastleigh & Winchester Family Help

Children's
Services

Partner Agency Support for L3/Early Help Cases:

Early Help Coordinator Workshops for Partner Agencies:

- 31st March 10-11am
- 20th May 1-2pm
- 7th July 9.30-10.30

Session aims:

- *Understanding of Early Help Co-Ordinator Role*
- *Clear understanding of the Early Help process*
- *Build partner agency confidence*
- *Access to support for the role*

If you/your agency are allocated as an Early Help Coordinator for a family, we can offer supervision/oversight support within the following slots:



Monday 24th March - between 9-11am

Monday 23rd June – between 9-11am

Friday 25th April – between 9-11am

Thursday 17th July – between 1-3pm

Wednesday 21st May – between 1-3pm

Early Help Event 16th January:

Thank you to all those who attended!

- 58 professionals in attendance
- Stands from SDA, Multiply, CAB, Winchester Counselling, Libraries, C&F Volunteers, Willow Team, Family Help Teams.
- We plan to do another event in the Summer.



Willow Team workshop – CPI forms and CERAF information:

- 16 professionals attended
- Resources and guidance shared.

Are there any other events or workshop themes that would be useful? Please let us know by emailing Rebecca Reeves or the Early Help Inbox

Key Themes and Data for Family Help

Data Themes:

- Eastleigh and Winchester currently have 1402 YP open for intervention or assessment
- This includes 167 children subject to Child Protection Planning across the 5 teams (including some supported by DCT). There are also 226 Looked After Children across the teams; the majority of which are supported by CIC
- In February 2025, the district completed 379 Child and Family Assessments. Additionally, there were approximately 110 Child Protection Investigations leading to 24 children being considered at an Initial Child Protection Conference

Top presenting issues in requests for support:

- Parenting support with managing behaviours and routines & boundaries (particularly neurodiverse traits)
- Support for Emotional Wellbeing & Mental Health (CYP / Parents)
- Poor school attendance/engagement
- Co-Parenting conflict
- Contextual safeguarding, particularly in Eastleigh

Early Help Hub

- We are hearing 8 cases per week at each hub – 15 min slots per family
- The Hub is seeking increased wider agency attendance at meetings
- The district now have 12 agencies leading on cases, which is great, but we are looking to increase this via the support offered that was detailed earlier