



Hampshire  
County Council

Improvement and  
Advisory Service

# District Headteacher Briefings Winchester & Eastleigh

Spring 1 2026

# Local headteacher updates – Winchester

## **New Appointments/Headships**

- Sparsholt CofE – Gemma Cutler (Jan 26)

# Local headteacher updates – Eastleigh

## **New heads**

- Mel Sparks – Freegrounds Jnr (Jan '26)
- Chandlers Ford Infants (Easter '26)

## **Acting/Interim heads**

- Jim Hartley – Fair Oak Jnr (Jan '26)
- Susannah Holmes – Freegrounds Inf (Jan '26)

## **Headships**

- Shakespeare Jnr (Sept '26)

# Education and Inclusion Update

## **Starting January 2026:**

- Chris Brooks-Martin, Primary School Improvement Manager
- Urmilla Choubae, Secondary Inspector/Adviser – Inclusion
- Chris Vaudin, Secondary Inspector/Adviser – Drama

## **Starting April 2026:**

- Laura Hamson, County Education Manager – SEN Resources and Access

# Summary

- [Hampshire moderation model 2026](#)
- [Standardisation for Year 6 teachers](#)
- [FFT webinar](#)
- [Key dates](#)
- Ofsted update and key reflections
- [Hampshire elections and pre-election period](#)
- [Spring inclusion briefings](#)
- LA SEND and Inclusion updates
- Parent/carers and professionals' leaflets – Ordinarily Available Provision
- [PLAB briefings](#)
- [IDP staff meeting](#)
- EYFS training
- [Breakfast club research survey](#)
- Reporting a school closure
- School travel planning team resources
- Headteacher Well-being

**Please read all  
slides for full  
information**

**Slides with actions  
are hyper-linked and  
relevant action is  
highlighted on the  
slide**

# Assessment Update

Spring 1 2026

# Hampshire Moderation Model 2026

Major changes to logistics for 2026 as per the [School Communication](#) at the end of autumn term

## Why the change?

The updated approach is designed to:

- **streamline the moderation process**, making it more efficient for schools and the LA
- **provide greater certainty for schools** by allowing them to plan, and hold dates in advance
- **reduce the impact** for schools who have moderators so there is less disruption in this key period
- **maximise the impact** and efficient deployment of moderators and associated resources within the window
- **increase quality assurance** opportunities for the 2025/26 moderation cycle.

## How the new model works:

If selected for moderation, schools will be moderated on one of two possible dates, assigned in advance to the district they are in.

The possible dates for each district will be spread across a two-week period, giving schools earlier notice of when they are likely to be moderated, **if selected**.

| Date             | District               |
|------------------|------------------------|
| <b>Week 1</b>    |                        |
| Tuesday 2 June   | Fareham & Gosport      |
| Tuesday 2 June   | Basingstoke & Deane    |
| Wednesday 3 June | New Forest             |
| Wednesday 3 June | East Hants             |
| Thursday 4 June  | Winchester & Eastleigh |
| Thursday 4 June  | Havant                 |
| Friday 5 June    | Test Valley            |
| Friday 5 June    | Hart & Rushmoor        |

|                   |                        |
|-------------------|------------------------|
| <b>Week 2</b>     |                        |
| Tuesday 9 June    | Winchester & Eastleigh |
| Tuesday 9 June    | Havant                 |
| Wednesday 10 June | Test Valley            |
| Wednesday 10 June | Hart & Rushmoor        |
| Thursday 11 June  | Fareham & Gosport      |
| Thursday 11 June  | Basingstoke & Deane    |
| Friday 12 June    | New Forest             |
| Friday 12 June    | East Hants             |

Any questions: [assessment@hants.gov.uk](mailto:assessment@hants.gov.uk)



# Standardisation for Year 6 Teachers - Writing – 25/26

This session is primarily to support Year 6 teachers in securing their statutory teacher assessments at the end of Key Stage 2 in writing. As part of this session, teachers will receive the latest updates from the STA regarding writing moderation.

The feedback for teachers from these sessions is intended to:

- Help teachers to evaluate their evidence base for writing against the pupil can statements in the Teacher Assessment Framework for KS2 writing
- Identify any additional evidence required prior to making their end of Key Stage teacher assessment judgements
- Support teachers in understanding the statutory responsibilities in relation to KS2 SATs.
- Support teachers in identifying which children are 'on track' to achieve the expected standard, which are not and implications for the curriculum

## Book Via Learning Zone:

### Dates:

|                  |                          |
|------------------|--------------------------|
| 10 February 2026 | Basingstoke and Deane    |
| 10 February 2026 | Fareham and Gosport      |
| 10 February 2026 | Havant and East Hants    |
| 11 February 2026 | Winchester and Eastleigh |
| 12 February 2026 | Test Valley              |

# Free – FFT Aspire webinar

## FFT Aspire Overview for Hampshire Primary Schools

### The session will cover:

|  |  |   |
|--|--|---|
| <b>Estimates and Target Setting</b> <ul style="list-style-type: none"><li>• How our algorithm works</li><li>• Uploading prior attainment to produce estimates</li><li>• How to set targets</li></ul> | <b>Attendance Tracking</b> <ul style="list-style-type: none"><li>• How we collect data</li><li>• The types of reports you'll receive</li></ul> | <b>Self Evaluation</b> <ul style="list-style-type: none"><li>• Key features</li></ul> |
|--|--|---|

### Who is the briefing aimed at?

The briefing is ideal for SLT and school assessment / data leads those who want a reminder of the features of the Aspire platform as well as an update on the new services provided by FFT.

**Meeting link:** [Aspire Overview Webinar - 11 March 09:30-10:30](#)

# Key dates for Hampshire 2025/2026

- **Friday 15 May 2026** – earliest date for notification of selection for statutory KS2 writing moderation by the local authority
- **Monday 18 May 2026** – headteacher briefing for schools selected for statutory KS2 writing moderation.  
Time: 9:30 – 10:45am
- **Monday 22 June 2026** – Hampshire re-moderation day for schools asked to submit further evidence as required
- **Friday 26 June 2026** – teacher assessment deadline

# Ofsted Update

Spring 1 2026

# Context

## **Nov/Dec 2025**

- Hampshire – 5 primary inspections
- South-east – 40 inspections
- Very few had same grade across all areas

## **From Jan 2026**

- Back to 'full speed' – 8 primary inspections
- Schools will be inspected in 4-year cycle
- Maintained early years only inspected in spring and summer term.

# Reflections

- Know the framework
- Be ready to manage EYFS, inclusion, early reading/writing/maths and wider curriculum on day 1 – how will you release leaders and manage the team
- Think about whether you want to agree to any judgements on day one
- Leaders need to be reflective in their self-evaluation

# Reflections

- You **cannot** read across the frameworks
- Know the ISDR, being ready and prepping with case studies – exemplars are helpful
- Leaders should take control and lead inspection – point out the obvious – don't assume inspectors see everything
- Know what is in the books – helps with exemplification of evidence e.g. impact on handwriting/transcription skills/sentence structure etc. good to have range of examples including vulnerable groups

# Reflections

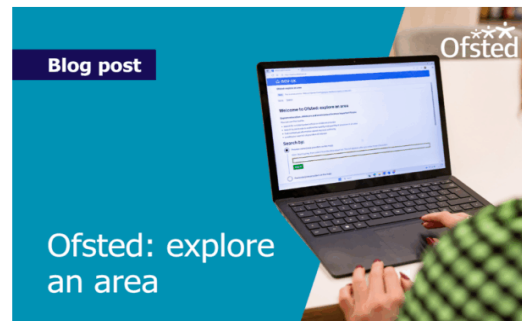
- Know the language of the framework and use it appropriately  
e.g. typically/generally/on the whole
- Challenge where what is seen is not typical
- Communication is key
- Be aware of work in books across the wider curriculum
- Governance – inspectors are looking at previous minutes – are governors ready for this – can they review and check for impact ahead of time



# November/December updates



[The role of data on school and further education inspections](#)



[Ofsted: explore an area](#)



[School inspections: frequently asked questions](#)



[Understanding Ofsted report cards and grades](#)

[Beyond the classroom: the experiences of children with SEND who are not in school](#)

# General update

Spring 1 2026

# Plan ahead for HCC elections in 2026

- HCC elections are expected to go ahead on Thursday 7 May 2026 which means we all need to ensure compliance with pre-election.
- From **Wednesday 25 March 2026**, the start of the **pre-election period**, we must follow strict rules on publicity set out in the Local Government Act 1986 and the Code of Recommended Practice on Local Authority Publicity (2011). These rules exist because the weeks leading up to an election are considered a period of heightened sensitivity.
- During this time, you must **‘not publish any material which, in whole or in part, appears to be designed to affect public support for a political party’**.
- During this time, you must not publish material that could be seen as influencing how people vote or showing support for a political party. Similarly, there should be no publicity about individuals who are standing in the election.

# What does 'publicity' mean?

In simple terms, 'publicity' means any communication to the public, in any form – press releases, social media posts, webpages, correspondence to partners and stakeholders, public events, consultations, the list goes on.

## Key points to consider:

- **Visits and events:** Visits and events should not be organised during the pre-election period as restrictions apply to official visits and promotional activity during this time.
- **Public engagement and publicity:** All communications must remain politically neutral in line with guidance.

# Pre Election Period

- Do not have visits from councillors or politicians that can / will / might be used in their campaign publicity.
- Do not allow the prime minister to visit – even if they ask to!
- Every election period someone falls foul of the regulations.
- If in doubt speak to the press office and or your SIM.

# Elections – pre-election period – find out more

Information and guidance on Hampshire County Council elections, and the pre-election period can be found on our webpages, at:

- [www.hants.gov.uk/aboutthecouncil/electionsandvoting](http://www.hants.gov.uk/aboutthecouncil/electionsandvoting)
- [HCC guidance for staff on whole elections](#)
- [LGA pre-election guidance](#)

We'll share further reminders and support as we approach the pre-election period, but early planning is essential.

**Please ensure that your governing body is fully aware of this guidance**

# Spring Inclusion Briefings

These online meetings aim to provide insight into some of the foundational elements which underpin inclusion and which are essential knowledge for anyone working towards creating a culture of inclusion.

The sessions will cover:

- the role and work of the Local Area Partnership Board
- the current landscape of special educational needs and how the graduated approach is central to achieving inclusion in practice
- alignment of the Ofsted toolkit against the principles of the graduated approach, ordinarily available provision and inclusion,

For headteachers and senior leaders in all schools; the information will also be shared in the SENCo network meetings.

**Please sign up to attend one of three mid-afternoon on-line meetings**

Monday 9 February 2026: 15:00-16:00

[Click here](#)

Tuesday 10 February 2026: 15:00-16:00

[Click here](#)

Wednesday 11 February 2026 15:00-16:00

[Click here](#)

# Local Authority Inclusion and SEND Update

## SEND and Inclusion Authority Offer

### Support and Development for SENCOs

- Sign them up to the termly, phase specific SENCO briefings [Hampshire Teaching and Leadership College | Education and learning | Hampshire County Council](#)
- Sign them up to a session of the SENCO development programme [Hampshire Teaching and Leadership College | Education and learning | Hampshire County Council](#)
- Get them to use the SEN support line [SEN Support Line Enquiry Form](#)

### Implementing Ordinarily Available Provision

- Contact an early adopter school or watch the introductory videos – school communication linked to the image [OAP and SEND support - March 2025](#)
- Attend the High Quality Inclusive Teaching through Ordinarily Available Provision programme [Hampshire Teaching and Leadership College | Education and learning | Hampshire County Council](#)

### Supporting SEND?

- Complete the elearning modules [SEN Moodle: All courses](#) 95% of those completing would recommend
- Access SEN Matters [Course: SEN Matters](#)
- Explore the toolkit [Course: Hampshire SEN Support Toolkit](#)

### Using Alternative Provision

- Alternative Provision Moodle page and guidance [Course: Alternative Provision](#)
- School communication with revised guidance [Updated Guidance on Alternative Provision](#)



#### SEND and Inclusion Authority Offer

Harrison, Laura  
School Imp Mgr (Spengrove and inclusion)

In order to make things as simple and user friendly as possible, the broad training and guidance offers from authority services have been collated for ease of identifying the best avenues for support.

#### Whole school support

| Service   | Offer includes  | Where to find information   |
|---|---|---|
| Ethnic Minority and Traveller Achievement Service (EMTAS) | Year 8 transition, cultural awareness and EAL, whole school EAL and Traveller support   | EMTAS Moodle<br>Year 8 referrals and training for Early Years<br>EMTAS training courses<br>The EAL excellence award |
| Hampshire Outdoors  | SEND and PE, SEND and Educational Visits  | Resources section of Evolve <a href="#">EVOLVE</a>  |
| Hampshire Educational Psychology                          | School Wide Advocate for Neurodiversity (SWAN), Supporting learning through play, ELSA, Lego therapy, Motivational interviewing, Cognitive Behaviour Approaches - CBA, Therapeutic Active Listening Assistants - TALA | HEP<br>Therapies - docs   |



#### Ordinarily Available Provision and SEND Support Guidance Launch Videos and Resources

Harrison, Laura  
School Imp Mgr (Spengrove and inclusion)

Thank you to all those who took time to attend the webinars for the ordinarily available provision and SEND support guidance launch. For those unable to make it, please find the video versions for your use.

[Senior Leaders and SENCOs](#)

[Teaching and Support Staff](#)

Alongside the webinar the [whole school and teaching staff audits](#) have also been shared, so please find those attached for use.

Finally, thank you to all those schools who have agreed to be early adopters and points of contacts for other settings. Should you wish to liaise with any of these schools, then please see the list of adopters.

#### Primary

| District | School  |
|----------|---|
| Havant   | Springwood Federation <a href="#">adminoffice@springwood.hants.sch.uk</a><br>Warren Park Primary School <a href="#">adminoffice@warrenpark.hants.sch.uk</a><br>Hart Plain Infant School <a href="#">adminoffice@hartplain-inf.hants.sch.uk</a><br>Hart Plain Junior School <a href="#">adminoffice@hartplain-jun.hants.sch.uk</a><br>Purbrook Junior School <a href="#">adminoffice@purbrook-jun.hants.sch.uk</a><br>Berewood Primary School <a href="#">office@berewoodprimary.co.uk</a> |



# Local Authority Inclusion and SEND Update



## SEND and Inclusion Authority Offer

 Hamson, Laura  
School Imp Mgr (Specprov and inclusion)

In order to make things as simple and user friendly as possible, the broad training and guidance offers from authority services have been collated for ease of identifying the best avenues for support.

### Whole school support

| Service   | Offer includes  | Where to find information   |
|---|---|---|
| Ethnic Minority and Traveller Achievement Service (EMTAS) | Year R transition, cultural awareness and EAL, whole school EAL and Traveller support   | <a href="#">EMTAS Moodle</a><br><a href="#">Year R referrals and training for Early Years</a><br><a href="#">EMTAS training courses</a><br><a href="#">The EAL excellence award</a> |
| Hampshire Outdoors  | SEND and PE, SEND and Educational Visits  | Resources section of Evolve <a href="#">EVOLVE</a>  |
| Hampshire Educational Psychology                          | School Wide Advocate for Neurodiversity (SWAN), Supporting learning through play, ELSA, Lego therapy, Motivational interviewing, Cognitive Behaviour Approaches - CBA, Therapeutic Active Listening Assistants - TALA | <a href="#">HEP</a><br><a href="#">Therapies - docs</a>   |

## SEND and Inclusion LA offer



## Ordinarily Available Provision and SEND Support Guidance Launch Videos and Resources

 Hamson, Laura  
School Imp Mgr (Specprov and inclusion)

Thank you to all those who took time to attend the webinars for the ordinarily available provision and SEND support guidance launch. For those unable to make it, please find the video versions for your use.

### [Senior Leaders and SENCOs](#)

### [Teaching and Support Staff](#)

Alongside the webinar the [whole school and teaching staff audits](#) have also been shared, so please find those attached for use.

Finally, thank you to all those schools who have agreed to be early adopters and points of contacts for other settings. Should you wish to liaise with any of these schools, then please see the list of adopters.

### Primary

| District | School   |
|----------|--|
| Havant   | Springwood Federation <a href="mailto:adminoffice@springwood.hants.sch.uk">adminoffice@springwood.hants.sch.uk</a><br>Warren Park Primary School <a href="mailto:adminoffice@warrenpark.hants.sch.uk">adminoffice@warrenpark.hants.sch.uk</a><br>Hart Plain Infant School <a href="mailto:adminoffice@hartplain-inf.hants.sch.uk">adminoffice@hartplain-inf.hants.sch.uk</a><br>Hart Plain Junior School <a href="mailto:adminoffice@hartplain-jun.hants.sch.uk">adminoffice@hartplain-jun.hants.sch.uk</a><br>Purbrook Junior School <a href="mailto:adminoffice@purbrook-jun.hants.sch.uk">adminoffice@purbrook-jun.hants.sch.uk</a><br>Berewood Primary School <a href="mailto:office@berewoodprimary.co.uk">office@berewoodprimary.co.uk</a> |

## Ordinarily Available Provision and SEND Support Guidance Launch Videos and Resources

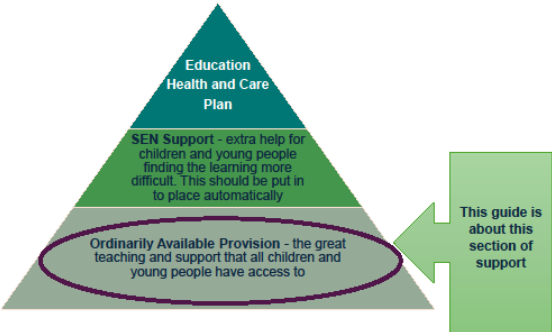
# Parent / Carer Leaflets

## Developed through the Local Area Partnership Board

For distribution and adding to school websites

**Hampshire's Local Area Partnership Strategy**  
Parents' guide to help for all in education settings  
© Hampshire County Council 2025

**Parents' guide to help for all in education settings**  
**Ordinarily Available Provision**




**What is Ordinarily Available Provision?**

This is the help that every child or young person should get in their education setting. It is the support which everyone accesses, even if they do not have special needs. You can watch a video about it on this link: [Family Information and Services Hub | Ordinarily Available Provision and SEND Support](#)

**What should ordinarily available provision look like?**


**In the classrooms:**

- Special chairs or desks
- Calm colours and not too much noise or clutter
- Tools to help with keeping focus and learning
- Sitting in the best place to learn
- Pictures to help understand and remember information



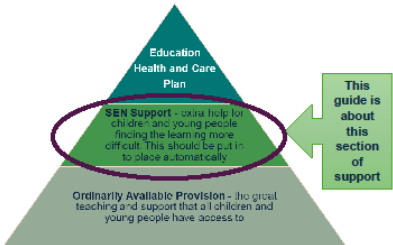
**What adults do:**

- Believe everyone can do well



**Hampshire's Local Area Partnership Strategy**  
Parents' guide to help for all in education settings  
© Hampshire County Council 2025

**Parents' guide to help for all in education settings**  
**Special Educational Needs (SEN) support**




Some children and young people need more help than others. This is why SEN support is available. It is extra help for anyone finding the learning harder to make sure they can still achieve success. This does not need extra funding and is put in place to make sure that everybody can progress. It is regularly reviewed. You can watch a video about it on this link: [Family Information and Services Hub | Ordinarily Available Provision and SEND Support](#)

**Types of SEN support**


**Help with learning:**


- Extra time to learn and prepare
- Using computers or voice recorders
- Link the learning to interest areas
- Having word lists or reminder bookmarks
- Getting extra help with reading, writing and maths



**Help with talking and understanding:**

- Using someone's name and standing close when talking
- Using pictures and signs to help understanding
- Keeping instructions short
- Using songs and rhymes to teach new words
- Giving choices
- Using timers
- Using simple language which is clear
- Having a special work space
- Teaching how to use sounds and words to work out meaning
- Using stories to help get ready for something





Parent/carers  
leaflets on  
Ordinarily  
Available Provision  
and SEN support

# Professional Leaflets

## Developed through the Local Area Partnership Board

**Hampshire's Local Area Partnership Strategy**  
Professionals' guide to help for all in education settings  
© Hampshire County Council 2025

### Professionals' guide to help for all in education settings

#### Ordinarily Available Provision and Special Educational Needs (SEN) support

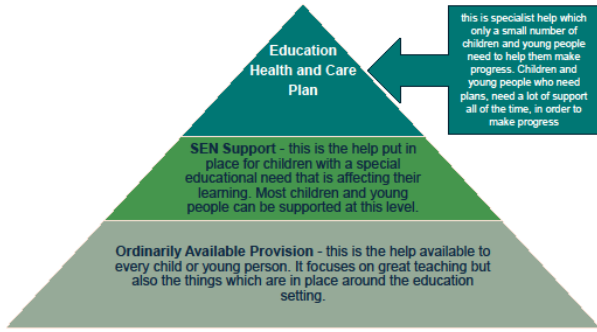
##### What is Ordinarily Available Provision?

This is the help that every child or young person should get in their education setting. It is the support which everyone accesses, even if they do not have special needs. You can watch a video about it on this link: [Family Information and Services Hub | Ordinarily Available Provision and SEND Support](#)

##### What is Special Educational Needs support?

Some children and young people need more help than others. This is why SEN support is available. It is extra help for anyone finding the learning harder to make sure they can still achieve success. This does not need extra funding and is put in place to make sure that everybody can progress. It is regularly reviewed.

##### What to expect from schools and education settings?



Education Health and Care Plan

SEN Support - this is the help put in place for children with a special educational need that is affecting their learning. Most children and young people can be supported at this level.

Ordinarily Available Provision - this is the help available to every child or young person. It focuses on great teaching but also the things which are in place around the education setting.

this is specialist help which only a small number of children and young people need to help them make progress. Children and young people who need plans, need a lot of support all of the time, in order to make progress.

Hampshire County Council NHS Hampshire Health England JAGS ES SENIORS

For sharing as you see appropriate

Professionals' guide

# Prejudicial Language and Behaviour Headline data (2024-25) – briefings for SLT

Thursday 5th Feb 3:45-4:45pm

Tuesday 10th Feb 3:45-4:45pm

Wednesday 11th Feb 3:45-4:45pm

The briefings are **online**; you will be sent the Teams link when you have booked your place.

Please select **one** of the above dates and book your place via the link below.

[Prejudicial language and behaviour briefings 2026 sign up](#)





On behalf of the Inclusion and Diversity Partnership, we would like to invite your school to join the next free, online, collaborative staff meeting to further explore the county's work on inclusion and diversity.

**What?**

# The big IDP staff meeting

**When?**

**28 January 2026, 15:45 – 17:00**

**Who?**

Schools from across the county: headteachers, teaching and support staff, governors

**Why?**

Opportunity to work collaboratively to explore the county's work on promoting and developing belonging, inclusion and diversity in our schools

Supporting  
a sense of  
belonging  
through  
pupil voice

[Inclusion and Diversity staff meeting: 28 January 2026](#)  
[– Sign up form](#)



# Spring 2026 – EY Advisory Team Training Opportunities

|   |         |
|---|---------|
| <u>EYFS Diving Deeply into Literacy</u>   | 10.2.26 |
| <u>Inclusion in Year R – Schemas in school</u>  | 12.3.26 |
| <u>Developing learning through meaningful interactions: Sustained Shared Thinking</u> | 25.3.26 |
| <u>The Great Outdoors</u>   | 26.3.26 |



[Early Years Advisory Team Training Brochure](#)

# Buy one, get one FREE!

## Book on one of our EYFS training courses and your subject leader comes FREE!

|   |                                  |   |
|---|----------------------------------|---|
| Diving Deeply into Literacy                                   | 10 February 2026<br>9.30 – 16.00 | <a href="#">EYFS - Diving Deeply into Literacy in the EYFS – SAP SuccessFactors</a>                                     |
| Moving on Up  | 9 June 2026<br>9.30 – 16.00      | <a href="#">EYFS - Moving on Up! Transition to Year One (taking the EYFS principles into YR 1) – SAP SuccessFactors</a> |
| Chop, Grate, Make   | 11 June 2026<br>9.30 – 16.00     | <a href="#">EYFS - Chop, Grate and Make - Introducing Food Technology to EYFS – SAP SuccessFactors</a>                  |
| Mathsful Play   | 19 June 2026<br>9.30 – 16.00     | <a href="#">EYFS - Mathsful Play – SAP SuccessFactors</a>   |
| Positive Beginnings: Sparking Executive Function in Reception | 30 June 2026<br>9.30 – 12.30     | <a href="#">EYFS - Positive Beginnings: Sparking Executive Function in Reception – SAP SuccessFactors</a>               |

[Early Years Advisory Team Training Brochure](#)

# OIT Breakfast Clubs Research - survey link

The Open Innovation Team, based in government, are inviting primary school staff to complete an [online survey](#) on primary school breakfast clubs. This is a chance for school staff to share views on staffing for breakfast club and to feed into policy design. All responses are anonymous, and no individual school will be identified. The survey is open to all primary school staff, whether you are involved in running a breakfast club or not. You can also sign up for focus groups and 1-1 interviews, but this is completely optional.

The Open Innovation Team are particularly keen to hear from teaching assistants and other school support staff, so please pass onto any team members who would be interested in sharing their views. Deadline for completion is 30 January 2026.



# Reporting a school closure

The screenshot shows the Hampshire County Council website. At the top, there is a dark blue header with the council's logo, the word 'Services', a search bar, and links for 'Sign in' and 'Register'. Below the header is a light blue banner with an information icon, the text 'Local government reorganisation Have your say on the Government's consultation', and a close icon. The main content area has a light grey background. It starts with a 'Home' link. The main heading is 'Emergency school, college, children's centres and nursery closures in Hampshire'. Below this is a sub-heading: 'Find out if your local school, college, children's centre or nursery is closed for an emergency situation'. A bold notice states: 'Emergency closures are displayed on this page as we are notified. Please visit the establishment website for the most up-to-date information.' Below the notice is a green button labeled 'Report a Closure >' followed by the text '(schools, colleges and children's centres only)'. Further down, it says 'See also closures within [Southampton](#), [Portsmouth](#) and the [Isle of Wight](#).' At the bottom, a paragraph explains that the decision to close a school is for local management, based on conditions at the school and the health and safety of staff and pupils, and that information will also be made available to parents/carers through the school's normal communications channels.

[Emergency school, college, children's centres and nursery closures in Hampshire | Education and learning | Hampshire County Council](#)

# Reporting a school closure

- In order to submit an emergency school closure form, a school user needs to have an active guest user account registered against the school that they are trying to submit the form for.
- **Guest user accounts can only be linked to a single school, and due to the way that the Information Hub is set up, schools within the same federation must be treated as separate organisations and cannot be linked.**
- The Information Hub for Educational Settings has a Guest Management Account system, which enables users with existing access to the Information Hub within an educational establishment to create and delete accounts for their own school.
- Full guidance on this process can be found:

[School Guest User Account Management - Information Hub for Educational Settings](#)

# Travel Planning Team support – Parking and access

**Parking issues are common at schools, impacting safety, air quality, and local residents. HCC supports schools through education, promotion, and enforcement.**

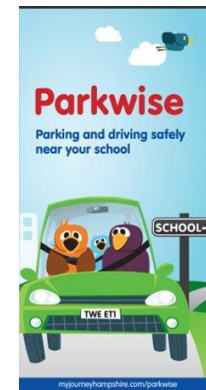
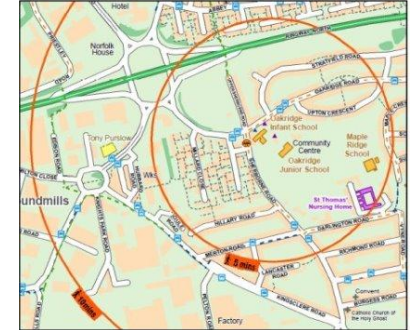
A [school resource pack](#) has been developed to support schools improve parking through encouraging active travel, and promote healthier lifestyles.

Taking time to think of some of the root causes of the issue can be really beneficial to implementing effective interventions and behaviour change initiatives. Possible things to consider:

- location of school,
- resident parking,
- restrictions on road,
- access points on to the school site,
- pupil catchment and location of families.

Solutions can range from;

- **Parking campaigns/pledge;**
- **Junior Road Safety Officer programme;**
- Set up and promote **Park and Stride** site;
- **Assembly** delivered by HCC's parking team;
- **New parent starter pack;**
- **Parkwise Apprentice** classroom resource;
- Highlighting the benefits to parents of the chance to **walk, talk and listen** with their child on the journey to school



# Travel Planning Team support – physical/mental health benefits

Walking, wheeling, cycling or scooting to school can contribute substantially to the recommended 60 minutes of moderate-to-vigorous physical activity, even if it's for the last part of the journey.

As well as the many health benefits, it also brings a sense of joy and happiness to the start and end of the school day, and provides a chance for social interaction with friends and neighbours. Parents can also establish a positive daily routine with their child to make time to talk and listen to their child, which is less intimidating by being side by side.

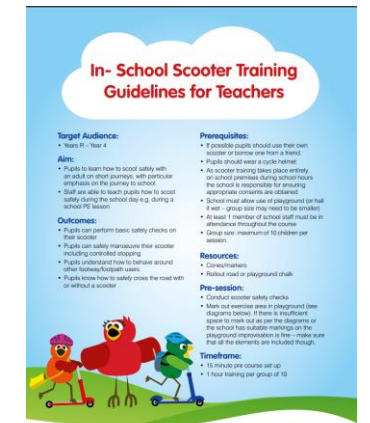
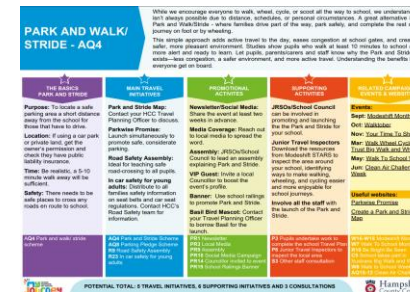
In turn, children are ready to learn and develop a number of life skills enabling them to live stronger, safer and independent lives.

Further information:

[Primary schools in Hampshire | My Journey Hampshire](#)

The team provides;

- annual campaigns
- Spring into Action
- Quick Guides
- Lesson plans
- Transition Time resource packs



# Travel Planning Team support – contact details

**Email:** [travelplans@hants.gov.uk](mailto:travelplans@hants.gov.uk)

**Website:** [myjourneyhampshire.com/education](https://myjourneyhampshire.com/education)

**Newsletter:** [Newsletter sign up | My Journey Hampshire](#)



[@myjourneyhants](#)



[@MyJourneyHants](#)



[@myjourneyhampshire](#)





# Support Available for Headteachers



A network community for school leaders focused on *intentional well-being support*

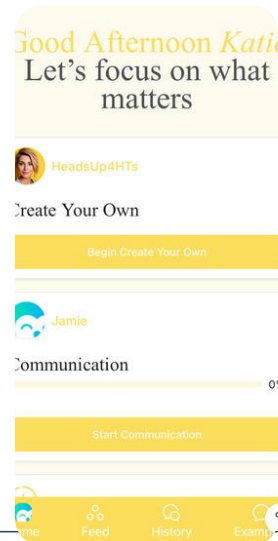
Coaching  
Events  
Book Clubs  
Safe Spaces  
Training  
Workshops  
Conference Keynotes

[www.headsup4hts.co.uk](http://www.headsup4hts.co.uk)



## Peer Support Group- Every Wednesday

- Free, weekly support group for headteachers
- Friendly, confidential, non judgemental support
- Led by a HeadsUp4HTs Facilitator



## Well-being App

- 24/7 Well-being support
- 24/7 Coaching
- Positive Psychology
- AI support based on
- HeadsUp4HTs insights
- £15pm





A network community for school leaders focused on *intentional well-being support*

Coaching  
Events  
Book Clubs  
Safe Spaces  
Training  
Workshops  
Conference Keynotes

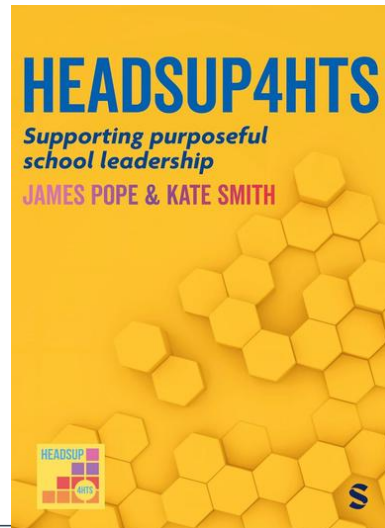
[www.headsup4hts.co.uk](http://www.headsup4hts.co.uk)

# Support Available for Headteachers



## 1-1 Coaching for school leaders

- 1-1 coaching focused on sustainable leadership & well-being
- 6 x 1 hour session £895



## Supporting Purposeful Leadership

- Written by Headteachers, for headteachers
- 9 steps to well-being
- Insights from thousands of headteachers
- Practical strategies to support well-being
- Available on Amazon £19.99