



Hampshire
County Council

Improvement and
Advisory Service

District Headteacher Briefings Winchester & Eastleigh

Autumn 2 2025

Local headteacher updates - Winchester

Acting/Interim heads

- Sparsholt CofE - Jane Gwilliam

New Appointments/Headships

- Sparsholt CofE – Gemma Cutler (Jan 26)

Local headteacher updates – Eastleigh

New heads

- Melanie Sparks – Freegrounds Jnr (Jan '26)

Acting/Interim heads (Dec '25)

- Charlotte Hartley – Hiltingbury Junior
- Zoe Loosemore – Fair Oak Jnr
- Terri Blake and Vicky Davies – Freegrounds Jnr

Headships

- Chandlers Ford Infants (Easter '26)

E and I update

Caroline Wilkins (SIM for Havant and East Hants) leaves at Christmas and Chris Brooks Martin takes over.

Summary

- [Martyn's Law training](#)
- Legal duty to support deaf parents
- IDSR updates
- [IDSR virtual training](#)
- National curriculum assessment portal
- Ofsted Update
- [Public Health Survey for Year 5 and Y6](#)
- [Understanding Local Area Partnership](#)
- Local authority SEND and Inclusion offers
- Escalation of concerns – C&F and SEND
- CERAf workshop (Y5/Y6 practitioners)
- [W&E EHH Update](#)
- [Legionella checks \(29-31\)](#)
- Holiday Activity and Food (HAF)
- [Hampshire SENDIASS online workshops](#)
- Headteacher Well-being

**Please read all
slides for full
information**

**Slides with actions
are hyper-linked and
relevant action is
highlighted on the
slide**

Martyn's Law training

Three further dates for Martyn's Law webinars/workshops have been added. **School leaders are recommended to attend.**

Two have already taken place in November, the next is on **4 December**, click on the link to join:

- [Thursday 4th December 1200-1255 Join the meeting now Meeting ID: 318 653 548 939 2 Passcode: jE795e4D](#)

Legal Duty to Support Deaf Parents

Equality Act 2010

Under the Equality Act 2010, schools must:

- Make reasonable adjustments to avoid substantial disadvantage to disabled individuals
- This includes providing British Sign Language (BSL) interpreters or other communication support.
- The duty is anticipatory – schools must plan ahead and not wait for a request
- Budget constraints are not a valid exemption.

Support Available

Hampshire County Council's Specialist Teacher Advisory Service can:

- Advise schools on legal responsibilities and best practice with regard to this provision
- Signpost to qualified BSL interpreters (in person or virtual)

Hampshire County Council are committed to ensure that all parents can participate fully in their child's education.

Assessment Update

Autumn 2 2025

IDSR updates

New release 4 November – includes updates to reflect the renewed framework.

- IDSR: news and updates: [IDSR: news and updates - GOV.UK](#)
- Schools can access IDSR via DfE Sign in: - [DfE Sign-in](#)
- Guidance: [School inspection data summary report \(IDSR\) guide - GOV.UK](#)



[The role of data on school and further education inspections – Ofsted: education](#)

New virtual CPD

Making the Most of the IDSR: A Practical Guide for School Improvement

This session offers a clear and practical exploration of the Inspection Data Summary Report (IDSR) — what it is, how it works, and how it can be used effectively to support school improvement. We'll look at recent changes and updates and explore how to interpret significant vs non-significant data to inform meaningful conversations about performance. Throughout the session, we'll consider how the IDSR might be viewed as a lens for identifying potential areas for investigation and strengthening self-evaluation

Three virtual sessions to choose from:

Date	Start time	Finish Time	Location
11 December 2025	09:00	10:30	Virtual – 1.5 hours
16 January 2026	13:30	15:00	Virtual – 1.5 hours
27 February 2026	09:00	10:30	Virtual – 1.5 hours

Price:	Sub - £60
	SLA - £50
	Full - £72

Making the Most of the IDSR: A Practical Guide for School Improvement

National Curriculum Assessment Portal

About the NCA Portal

The [NCA Portal](#) is a secure website that supports primary schools, local authorities and MATs with the administration of the:

- phonics screening check
- optional key stage 1 (KS1) tests
- statutory key stage 2 (KS2) tests and teacher assessment

Schools can:

- place test orders
- download phonics screening check and optional KS1 test materials
- register pupils for KS2 tests
- apply for KS2 access arrangements
- submit online attendance registers
- submit headteacher's declaration forms
- download teacher assessment standardisation training materials
- submit KS2 teacher assessment data
- view KS2 test results and marked test scripts

LA maintained schools:

- Automatically assigned to geographical LA for assessment and monitoring services (*notification email in autumn 1 confirmed this*)

Academies:

- Must select preferred LA for monitoring and moderation services by Jan 9th

Ofsted Update

Autumn 2 2025

Renewed Framework Updates

Parent view

On 10 November 2025, survey questions were updated to align with Ofsted's renewed inspection framework.

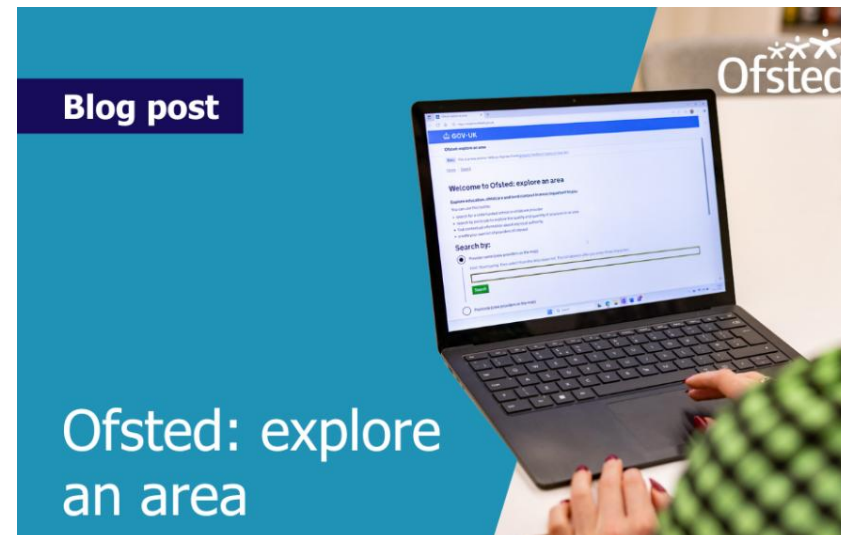
Guidance for schools is being update: [Ofsted Parent View: guidance for schools - GOV.UK](https://gov.uk/ofsted-parent-view-guidance-for-schools)

Explore an Area

Launched 10th November

Find local education and childcare information for areas across England.

[Ofsted: explore an area](https://gov.uk/ofsted-explore-an-area)



General update

Autumn 2 2025

Public Health Survey – Y5 (and Y6) pupils and staff

Public Health, in partnership with Children's Services, conducts surveys of pupils and learners in Primary Schools and Post-16 settings, and all education staff in early years, primary, secondary and post-16. These are every two years.

This is a unique opportunity to gain valuable insights into your pupils' wellbeing, experiences, and needs. New for this year, settings who sign up for the Primary survey also have the option of surveying their Year 6 pupils as well as Year 5.

The surveys identify areas where partners can work together to support education staff and settings and improve the wellbeing of children and young people.

Currently 10 schools in Eastleigh and 22 in Winchester

[Register your setting for the HealthEd Surveys today!](#)

Understanding the Local Area Partnership and SEND Inspection

The Local Area Partnership is an important part of our work to improve cross-system working and ensure children, young people and families are central to our SEND system across Hampshire.

It is vital that colleagues from all sectors working with children and young people with SEND are aware of the partnership, how to engage with the overarching strategy and have an awareness of the Local Area SEND inspection.

This session is a great opportunity to:

- Learn more about the Local Area Partnership and the SEND inspection process, and your roles and responsibilities in the process.
- Know how to prepare and contribute to the local area partnership and the local areas SEND inspection
- Explore the tools and resources available to support your work
- Ask any questions you may have in a relaxed, informal setting

 Wednesday 21st January 2026

 3:30 PM – 4:30 PM

 Online

Local Area Partnership and SEND
Inspection Learning Session: 21st
January 2025 Sign-up

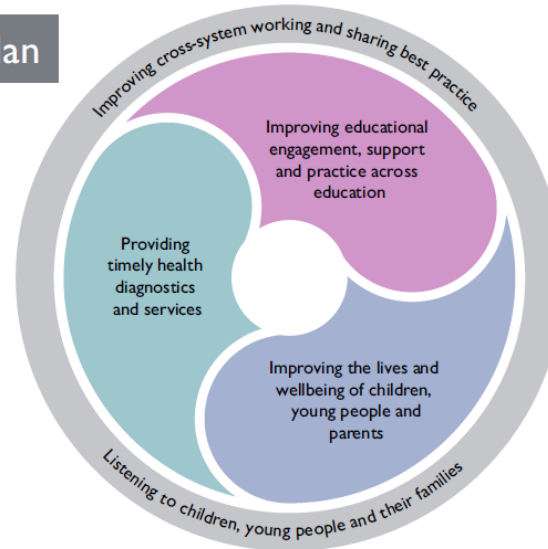


Hampshire's Local Area Partnership Strategy

Our vision



Our action plan



Our success criteria

We will know we have succeeded when....

1. The views of children, young people and their families informs all our work.
2. Children, young people and their families can access the information and services they need when they need it.
3. Data is routinely shared, and we all work towards the same goals.
4. Children and young people with SEND are happy and have positive social relationships.
5. Young people with SEND increasingly live independently and gain meaningful employment.
6. There is a culture of support to families and carers.
7. Children and young people with SEND and their families can access services and support that meet their needs at the earliest point, without barriers.
8. The mental and physical health of children and young people with SEND compares positively with their peers.
9. Children and young people with SEND are engaged in their education within an inclusive environment.
10. Everyone in the system, works together to improve educational engagement.
11. A robust, resilient and skilled education workforce can meet SEND needs.
12. Children and young people with SEND and their parents are appropriately prepared for adult life from a young age.
13. There is sufficient provision to meet the needs of all Children and young people with SEND in Hampshire.

Our approach

We will achieve our vision through strong multi agency and parental partnerships, having a shared understanding of challenges and working together on solutions.

We will measure progress by...

1. Bringing together Health, Education and Social Care data.
2. Tracking and reducing the gap between outcomes for children and young people with SEND and their peers.
3. Annually canvassing parents about their confidence in the system.
4. Annually canvassing professionals about system improvements.
5. Listening to children and young people about what matters to them and acting on their views.

We will work together well by...

1. Collectively owning the issues.
2. Securing cross-partnership agreement to progress all actions.
3. Spreading the word, creating a system-wide understanding of our ambition.
4. Routinely seeking the voice of all children and young people with SEND.
5. Holding ourselves and each other to account on delivery of our action plan.
6. Monitoring our progress through our Local Area Partnership board.
7. Supporting and be honest with each other.
8. Asking for help to solve systemic problems.
9. Being critical friends for each other.
10. Reducing inequalities.

Tools and Resources

- [Hampshire Local Area Partnership Strategy Action Plan and Self-Evaluation - April 2024](#)
- [SEND Local Area Partnership Strategy Document - April 2024](#)
- [SEND Local Area Partnership Board - Terms of Reference - April 2024](#)
- [Hampshire Area SEND Inspection briefing for professionals - July 2025](#)
- [Hampshire Area SEND Inspection briefing for parents/carers, children and young people - July 2025](#)
- [Hampshire Area SEND Inspection Frequently Asked Questions \(professionals\)](#)
- Professional overview of the [Local Area Partnership and Local Area SEND Inspection](#) or visit [Area SEND inspections: information about ongoing inspections - GOV.UK](#)
- Local Area SEND Inspection [Frequently Asked Questions \(professionals\)](#)

Sign up: Receive regular news and updates about the work of the Local Area Partnership: [Local Area Partnership newsletter](#)

Things to know

As one of the local area partners you will need to know:

- What is the local area partnership board?
- What are they working to achieve?
- How do you fit into the local area partnership?
- What are you doing that is supporting the work of the partnership board?
- How do you keep updated on what is happening and progress made?

Local Authority Inclusion and SEND Update

SEND and Inclusion Authority Offer

Support and Development for SENCOs

- Sign them up to the termly, phase specific SENCO briefings [Hampshire Teaching and Leadership College | Education and learning | Hampshire County Council](#)
- Sign them up to a session of the SENCO development programme [Hampshire Teaching and Leadership College | Education and learning | Hampshire County Council](#)
- Get them to use the SEN support line [SEN Support Line Enquiry Form](#)

Implementing Ordinarily Available Provision

- Contact an early adopter school or watch the introductory videos – school communication linked to the image [OAP and SEND support - March 2025](#)
- Attend the High Quality Inclusive Teaching through Ordinarily Available Provision programme [Hampshire Teaching and Leadership College | Education and learning | Hampshire County Council](#)

Supporting SEND?

- Complete the elearning modules [SEN Moodle: All courses](#) 95% of those completing would recommend
- Access SEN Matters [Course: SEN Matters](#)
- Explore the toolkit [Course: Hampshire SEN Support Toolkit](#)

Using Alternative Provision

- Alternative Provision Moodle page and guidance [Course: Alternative Provision](#)
- School communication with revised guidance [Updated Guidance on Alternative Provision](#)



SEND and Inclusion Authority Offer

Harrison, Laura
School Imp Mgr (Spengrove and inclusion)

In order to make things as simple and user friendly as possible, the broad training and guidance offers from authority services have been collated for ease of identifying the best avenues for support.

Whole school support

Service	Offer includes	Where to find information
Ethnic Minority and Traveller Achievement Service (EMTAS)	Year 8 transition, cultural awareness and EAL, whole school EAL and Traveller support	EMTAS Moodle Year 8 referrals and training for Early Years EMTAS training courses The EAL excellence award
Hampshire Outdoors	SEND and PE, SEND and Educational Visits	Resources section of Evolve EVOLVE
Hampshire Educational Psychology	School Wide Advocate for Neurodiversity (SWAN), Supporting learning through play, ELSA, Lego therapy, Motivational interviewing, Cognitive Behaviour Approaches - CBA, Therapeutic Active Listening Assistants - TALA	HEP Therapies - docs



Ordinarily Available Provision and SEND Support Guidance Launch Videos and Resources

Harrison, Laura
School Imp Mgr (Spengrove and inclusion)

Thank you to all those who took time to attend the webinars for the ordinarily available provision and SEND support guidance launch. For those unable to make it, please find the video versions for your use.

[Senior Leaders and SENCOs](#)

[Teaching and Support Staff](#)

Alongside the webinar the [whole school and teaching staff audits](#) have also been shared, so please find those attached for use.

Finally, thank you to all those schools who have agreed to be early adopters and points of contacts for other settings. Should you wish to liaise with any of these schools, then please see the list of adopters.

Primary

District	School
Havant	Springwood Federation adminoffice@springwood.hants.sch.uk Warren Park Primary School adminoffice@warrenpark.hants.sch.uk Hart Plain Infant School adminoffice@hartplain-inf.hants.sch.uk Hart Plain Junior School adminoffice@hartplain-jun.hants.sch.uk Purbrook Junior School adminoffice@purbrook-jun.hants.sch.uk Berewood Primary School office@berewoodprimary.co.uk

Local Authority Inclusion and SEND Update



SEND and Inclusion Authority Offer

 Hamson, Laura
School Imp Mgr (Specprov and inclusion)

In order to make things as simple and user friendly as possible, the broad training and guidance offers from authority services have been collated for ease of identifying the best avenues for support.

Whole school support

Service	Offer includes	Where to find information
Ethnic Minority and Traveller Achievement Service (EMTAS)	Year R transition, cultural awareness and EAL, whole school EAL and Traveller support	EMTAS Moodle Year R referrals and training for Early Years EMTAS training courses The EAL excellence award
Hampshire Outdoors	SEND and PE, SEND and Educational Visits	Resources section of Evolve EVOLVE
Hampshire Educational Psychology	School Wide Advocate for Neurodiversity (SWAN), Supporting learning through play, ELSA, Lego therapy, Motivational interviewing, Cognitive Behaviour Approaches - CBA, Therapeutic Active Listening Assistants - TALA	HEP Therapies - docs

SEND and Inclusion LA offer



Ordinarily Available Provision and SEND Support Guidance Launch Videos and Resources

 Hamson, Laura
School Imp Mgr (Specprov and inclusion)

Thank you to all those who took time to attend the webinars for the ordinarily available provision and SEND support guidance launch. For those unable to make it, please find the video versions for your use.

[Senior Leaders and SENCOs](#)

[Teaching and Support Staff](#)

Alongside the webinar the [whole school and teaching staff audits](#) have also been shared, so please find those attached for use.

Finally, thank you to all those schools who have agreed to be early adopters and points of contacts for other settings. Should you wish to liaise with any of these schools, then please see the list of adopters.

Primary

District	School
Havant	Springwood Federation adminoffice@springwood.hants.sch.uk Warren Park Primary School adminoffice@warrenpark.hants.sch.uk Hart Plain Infant School adminoffice@hartplain-inf.hants.sch.uk Hart Plain Junior School adminoffice@hartplain-jun.hants.sch.uk Purbrook Junior School adminoffice@purbrook-jun.hants.sch.uk Berewood Primary School office@berewoodprimary.co.uk

Ordinarily Available Provision and SEND Support Guidance Launch Videos and Resources

Escalation of concerns

September 2025

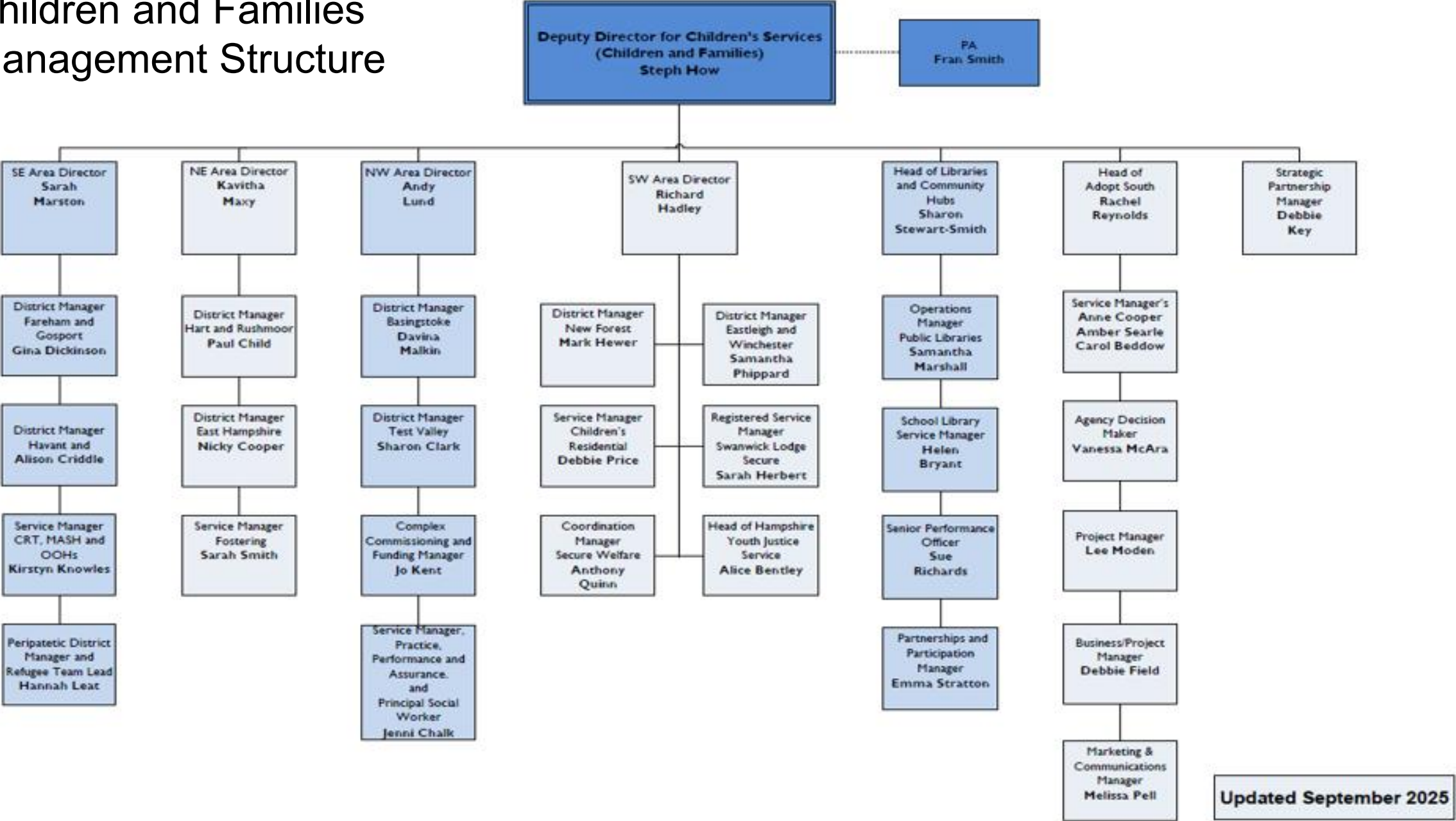
Escalation of concerns...

[Working Together to Resolve Professional Differences \(escalation and resolution\) | Hampshire, Isle of Wight, Portsmouth and Southampton](#)

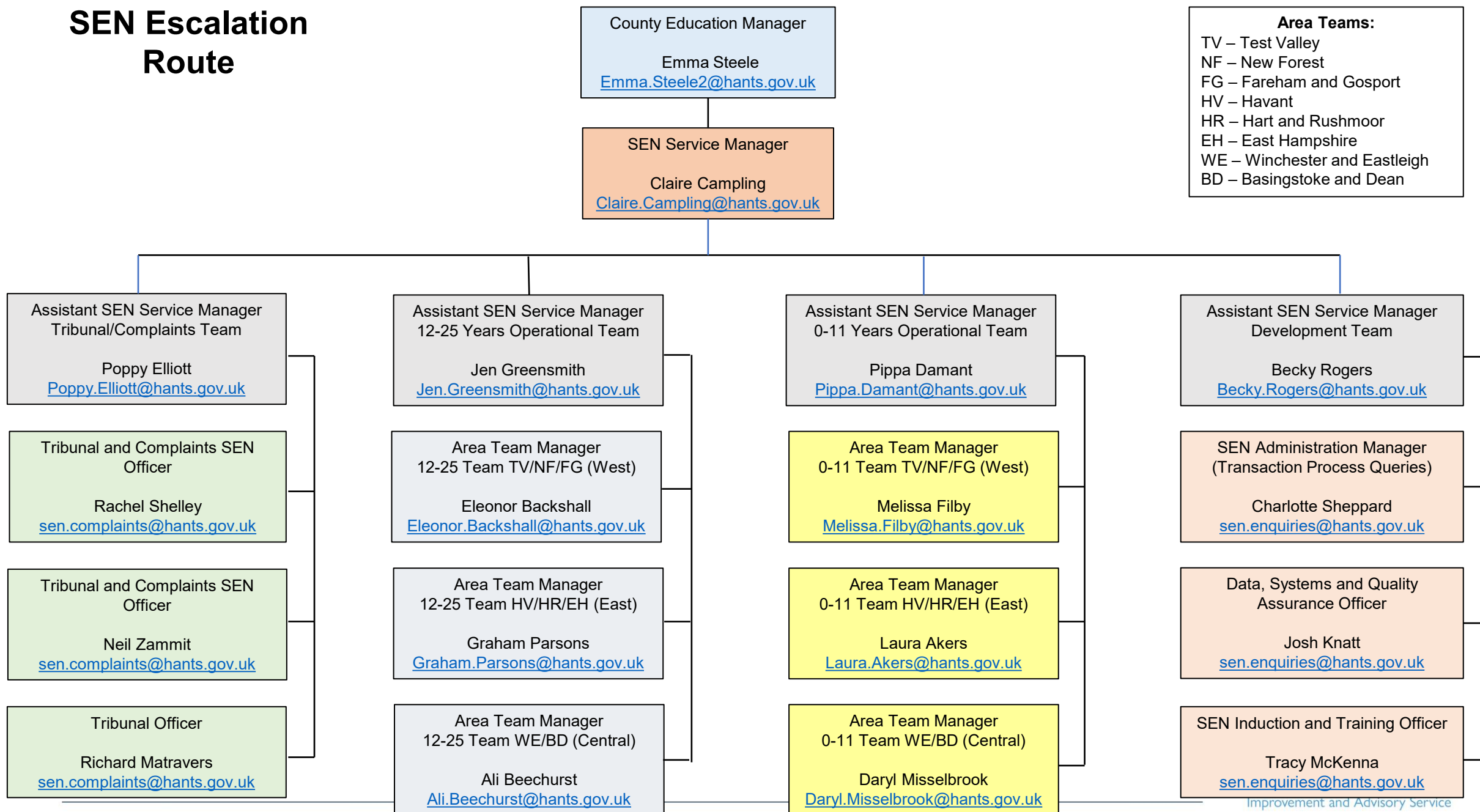
If you have concerns about social care or individual children, please use the above escalation protocol.

Emails direct to Stuart Ashley do not help to accelerate action (bit like a parent going to Ofsted before discussing with the school).

Children and Families Management Structure



SEN Escalation Route



Eastleigh & Winchester Family Help

Children's
Services

Partner Agency Event – CERAf Workshop

Thursday 29th January 2026 1.30-2.30pm Via TEAMS

To book please email: EastleighWinchester.EH@hants.gov.uk

Session aims:



CERAf (Child Exploitation Risk Assessment Framework) Workshop: A safeguarding tool used across Hampshire and the HIPS partnership: (Hampshire, Isle of Wight, Portsmouth, and Southampton) to identify, assess, and respond to risks of child exploitation.

W&E EHH update

There will be no Early Help Hubs on:

- Tuesday 23rd and Wednesday 24th December
- Tuesday 30th and Wednesday 31st December

From 7th January 2026

- We will trial a single Early Help Hub for both districts, held on Wednesday mornings via Teams. The proposal is to review up to 4 cases for Winchester and 4 cases for Eastleigh each week, grouped by district. I will review this approach at the end of January, to which your feedback is key, and we can agree on the way forward.

Timetable:

- Day/Time: Wednesdays, 10:00–12:00 pm via Teams
- Duration: 15 minutes per family
- Schedule: 10:00–11:00 am – Winchester core agencies 11:00–12:00 pm – Eastleigh core agencies

Education settings will be invited for specific cases as required.

If your agency is unable to attend, please ensure we receive feedback on the cases, as this is vital for informed decision-making and discussion.



Water Management (Legionella) activities – Head Teacher & Site Manager responsibilities

[Water Management \(Legionella\) activities – Head Teacher & Site Manager responsibilities](#)

School headteachers and site managers are reminded again of their obligations to carry out and report Water Management (Legionella) activities in **Concerto**.

Although many sites carry out and report in a timely manner, some are still failing to record activities on time and (in a small number of cases) to record any tasks on a regular basis.

If schools choose to keep paper records or logbooks on site, this **does not negate** the need to appropriately record activities digitally using Concerto.

School Responsibilities

A key aspect of the control measures is ensuring the water systems are **flushed regularly** to ensure water does not become stagnant in the pipework and tanks. It is also important to **monitor the temperature** of the hot and cold water to check they are at the correct levels, and to make sure that taps and shower heads are **regularly cleaned and descaled**.

Control measures may vary at each site dependent on its risk assessment; however, the standard controls (as a minimum) are:

- **Weekly** flushing of all water outlets (taps & showers) and twice weekly flushing of any little used outlets. Flushing must be carried out in accordance with the process set out in the corporate procedure.
- **Monthly** temperature recording of both hot and cold-water temperatures at the designated points on the system.
- **Quarterly** descaling of taps / shower heads.
- Recording of **all activities** using the County Council's asset management system, Concerto.

Previous communications on this matter can be read again on Schools Communications:

- [SC000025567: Legionella Management Briefing](#)
- [SC000026623: Health and Safety Governance in Schools.](#)
- [SC000026924: Legionella Management Activities](#)

Holiday Activity & Food (HAF) Programme

November 2025 - update

What is HAF?



The Holiday Activities and Food (**HAF**) Programme is funded by the DfE to provide **free engaging activities** and **nutritious meals** to children from **reception to year 11** (inclusive) who would normally receive **benefit-related free school meals** (FSM). The programme runs through the main **school holidays** and is delivered across Hampshire by the **connect4communities programme**.

Participation in the HAF programme supports our most vulnerable children with:

- receiving **healthy, hot** and **nutritious** meals
- maintaining a healthy level of **physical activity**
- being **happy**, having **fun** and meeting new **friends**
- developing a greater **understanding** of **food, nutrition** and other **health-related issues**
- taking part in **fun and engaging activities** that support their development
- feeling **safe** and **secure**
- getting **access** to the right **support services**
- returning to **school** feeling **engaged** and **ready to learn**

Summer 2025 HAF Parental Survey Headline Findings



Respondents told us that they liked:



The variety of activities available.



The friendly and supportive staff.



Opportunities for social interaction.



Routine and a structured, screen-free environment.



That the children enjoyed the food.



Positive impact on children with special needs.



Location and accessibility.



Barriers to attending included:



Not made aware of HAF by school or local groups.



Not enough available days/sessions.



No local schemes for children to attend.

Positive Impact of HAF on Children, Families and Schools



Reduced
food insecurity



Increased opportunities
for parent / carer's
employment



Reduced stress
for parent / carer



School
readiness



Community cohesion
and employment



Improved children's
mental health



Improved
physical health



Improved social skills
and experiences

Research published by Rosie Haste, Postgrad MSc Student from Brighton and Sussex Medical School (September 2024)

What can schools do to support HAF?

Encourage your eligible FSM children to apply for a HAF code to use at local provision – schools can apply on the behalf of families.

Support families with other vulnerabilities to apply direct to providers for discretionary HAF places. Full list of eligibility criteria is available on the connect4communities website: [What is HAF? | Hampshire County Council](#)

Consider running a HAF scheme at your school – you can apply to join as a HAF provider in 2026 or work with a local provider within your school.

Ensure the programme is promoted to the eligible children and families within your school. In the run up to the holidays, we share a school comms with flyers listing schemes running in each Hampshire district. In addition, HAF news is posted to our [Facebook page](#) which also shares information about our cost-of-living support projects.

For further information, email the HAF team via connect4communities@hants.gov.uk with the subject line **FAO HAF** or visit the connect4communities website: [Holiday Activities and Food \(HAF\) Programme | Hampshire County Council](#)

Hampshire SENDIASS - Online workshops

Need free, impartial advice on SEND for ages 0–25?

Join our confidential online workshops and get professional guidance plus peer support.

No booking required – just click 'Join' via our website:
www.hamshiresendiass.co.uk/workshops

Upcoming Workshops:

13 Nov | 09:30 – Responding to a draft EHCP
18 Nov | 10:00 – Appeals to SEND Tribunal
21 Nov | 10:00 – Ordinarily Available Provision and SEN Support
24 Nov | 13:00 – Considering an EHC Plan?
25 Nov | 10:00 – Responding to a draft EHCP
26 Nov | 12:30 – Alternative Provision



The poster features a yellow header with the Hampshire SENDIASS logo (a cluster of colorful dots) and the text 'Online Workshops'. Below the header is an orange section with a bulleted list of benefits. The main body consists of six colored boxes (three blue, three orange) arranged in a 3x2 grid, each containing a date, time, and topic. The footer is a solid blue bar with the website URL.

Hampshire SENDIASS Online Workshops

- Free impartial advice relating to SEND for 0-25 years.
- Confidential sessions not recorded.
- Peer support, talking to others experiencing a similar journey.
- A dedicated session with an experienced support worker

13 NOV 09:30	Responding to a draft EHCP If you are in that critical time frame having received your draft	18 NOV 10:00	Appeals to SEND Tribunal A step-by-step guide through the appeals process
21 NOV 10:00	Ordinarily Available Provision and SEN Support Looking at support available for those who do not have an EHCP	24 NOV 13:00	Considering an EHC Plan? Independent and impartial information to guide you through the process
25 NOV 10:00	Responding to a draft EHCP If you are in that critical time frame having received your draft	26 NOV 12:30	Alternative Provision What constitutes a suitable education in relation to section 19 of the education act

www.hamshiresendiass.co.uk/workshops

Headsup4HTS

HeadsUp4HTs

All support is confidential
and not shared with
HIAS

WELL-BEING SUPPORT FOR LEADERS IN HAMPSHIRE

PEER SUPPORT & 1:1 SUPPORT

SIGN UP TO JOIN A PROGRAMME

[HTTPS://FORMS.GLE/XKJWX6PHUL9BYU2S9](https://forms.gle/XKJWX6PHUL9BYU2S9)



HeadsUp4HTs and Hampshire (google.com)

OVERWHELMED? NEED A LISTENING EAR?

Get in touch & we will call you back



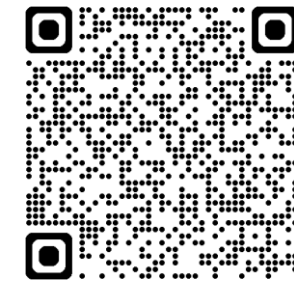



<https://forms.gle/F944PCjLkENNcSUx5>

1:1 CONFIDENTIAL SUPPORT

HeadsUp4HTs are available to talk with Headteachers who are looking for 1:1 emotional support & a listening ear.

- Confidential, non-judgemental safe space to share
- Up to 3 x 30 minute supportive phonecalls
- Wellbeing and emotional support
- A listening ear from someone who is or has been a Headteacher



Triage form for call back